



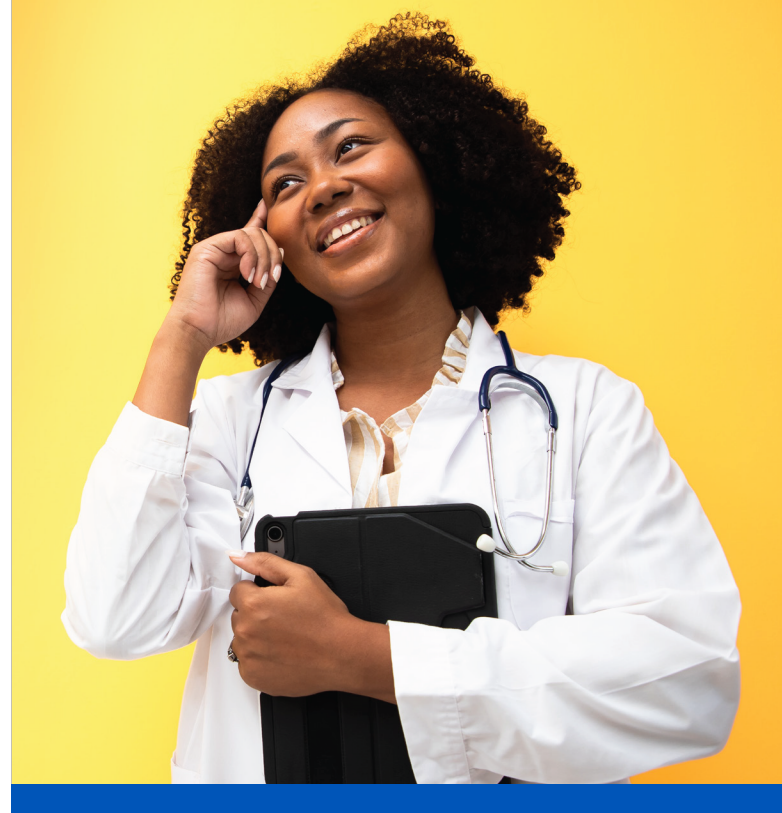
Update to Supplemental HCC Data Submission Requirements

Dear Valued Partners,

As outlined in the [CY 2027 FINAL Notice](#), the process for submitting supplemental HCC data will change. Per CMS guidance, all diagnoses submitted for risk adjustment must be supported by a valid claim or encounter submission.

Effective April 6, 2026:

- HCC diagnoses will only be accepted if received through standard claims/encounter data or through **LINKED** Supplemental Data submissions.
- **To be LINKED, all supplemental HCC data submissions must include the associated claim number that links each diagnosis to its originally submitted claim or encounter.**
- Supplemental HCC data submissions that do not include an original claim number **WILL NOT be accepted**. Such incomplete submissions will be rejected and returned to the submitter for correction, which may negatively impact RAF for the provider group.



This requirement ensures that all supplemental diagnoses:

- Align with the current CMS guidance, which eliminates HCCs that are not submitted on a valid claim/encounter or linked to a previously submitted claim/encounter; and
- Can be **validated under RADV audit protocols**.



IMPORTANT REMINDER:

All diagnoses must be supported by complete and compliant documentation.

We recognize that this change may require updates to internal processes. Our team is committed to supporting a smooth transition and is available to provide guidance on submission requirements.

Thank you for your continued partnership and commitment to compliant and accurate risk adjustment practices. These updates are critical to maintaining compliance with CMS regulations and ensuring the integrity of our claims and encounter data submissions.

Please reach out to us at **(844) 361-4712** if you have any questions, or contact your designated Network contact with any questions or to discuss implementation details.

Reference:

<https://www.cms.gov/newsroom/press-releases/cms-finalizes-2027-medicare-advantage-part-d-payment-policies-strengthen-accountability-long-term>



Alignment Health™